



Bridgewater Girls Softball League

Diamonds Are A Girl's Best Friend



The Bridgewater Girls Softball League and Mass Drifters Softball are teaming up to host an awesome August U16 tournament. The BGS fields are one of the finest on the South Shore featuring:

- Three completely fenced in and extremely well maintained fields.
- Clay infields
- Plenty of parking
- Scoreboards
- Conveniently located just minutes from routes 495 and 24
- Gorgeous snack shack offering breakfast and lunch menus – complete with front porch seating...!

We truly hope you will make this tournament one of your stops this summer...you and your team will not be disappointed....we look forward to hosting your team and hope to see you on our fields!

For up to the minute details on this tournament – please visit www.massdrifters.com

BGS/Drifter Tournament Rules

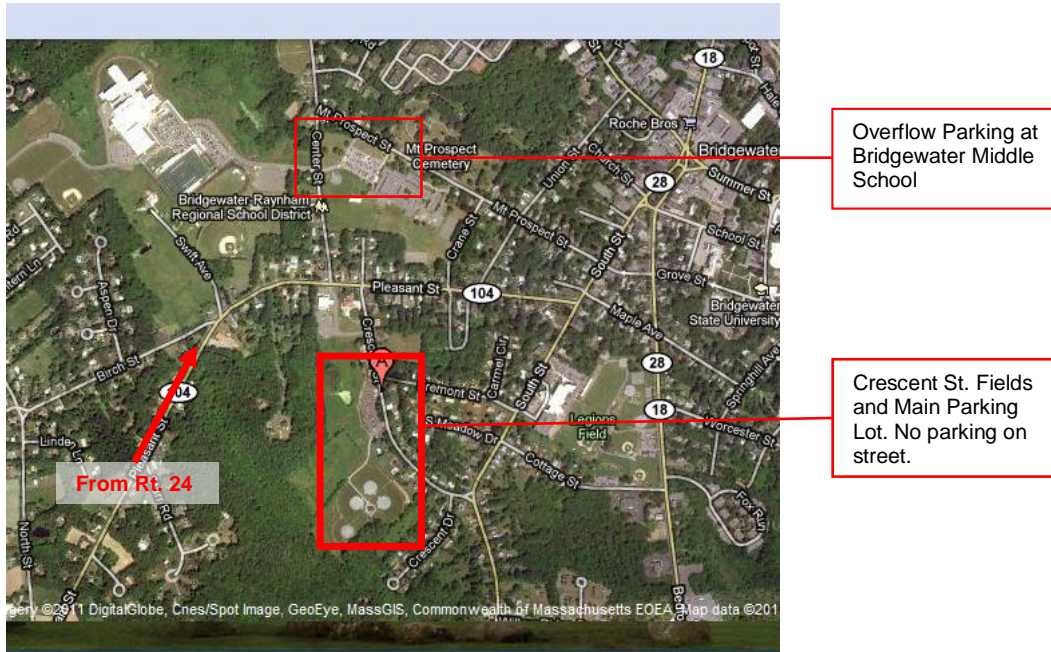
Official rules of the tournament's governing body are in effect.

1. Check-in
 - a. Teams must present final rosters to tournament headquarters before their first scheduled game
2. Game format
 - a. Round-robin games (Friday-Saturday)
 - i. Coin flip to determine home team
 - ii. 7 innings
 - iii. No new inning may begin after 1 hour-30 minutes
 - iv. Applicable slaughter rule in effect
 - v. No extra innings, i.e., teams may tie in seeding rounds
 - vi. Home team is official scorekeeper
 - vii. Both teams report results to tournament headquarters
 - b. Single-elimination bracket play (Sunday)
 - i. Home team is higher-seeded team
 - ii. 7 innings
 - iii. No new inning may begin after 1 hour-30 minutes

- iv. Applicable slaughter rule in effect
 - v. Winner must be declared
 - vi. International tie-breaker used if score is tied after last time permitted inning
 - vii. Home team is official scorekeeper
 - viii. Winning team reports results to tournament headquarters
- 3. Seeding
 - a. Each team will play three games in the Fri/Sat seeding round
 - b. Bracket seeding for championship play will be based on the results in this order of priority
 - i. Win-loss record
 - ii. Head-to-head results
 - iii. Runs allowed
 - iv. Offense-Defense run differential
 - v. Runs scored
 - vi. Coin flip
- 4. Late Arrivals/Forfeits
 - a. Teams must have a minimum of 8 players to begin a game; must have a minimum of 7 players to continue a game already begun. Failure to field the minimum in either case will result in a forfeit.
 - b. A 15-minute grace period from set game time only in your first game of the tournament will be allowed. Game time limits will be timed from scheduled start time unless game is delayed by late completion of previous game.
- 5. Safety
 - a. No on-deck warm up outside of dugouts. An on-deck cage is provided; please use it.
 - b. Only officials, players, and coaching staff are permitted in the dugouts or on the fields. All parents, spectators, etc. must be outside the fenced playing area.
 - c. Spectators must watch from the side areas of the enclosed fields – no spectators behind the backstops – this is for fan safety as there are three fields placed back-to-back, which creates a foul-ball hazard in that area.
- 6. Warm-up Area
 - a. One field will remain open for warm ups. This will be unscheduled and shared amongst all teams. Please respect other teams' needs.
 - b. NO soft-toss hitting, tee hitting, pitching, or throwing into the fences or backstops.
 - c. Please be aware of spectators, other players, etc. when warming up.
- 7. General
 - a. NO fires/barbecues/cooking
 - b. NO alcohol
 - c. NO smoking
 - d. NO pets
- 8. Parking
 - a. Parking only in the Crescent St. facility lot.
 - b. NO parking on street! Police will enforce parking restrictions

- c. Overflow parking is available at the Bridgewater Middle School lot at the intersection of Center St. and Mt. Prospect St. (approx. ¼ mile from fields)

Directions to BGSL's Crescent St. Fields in Bridgewater, MA
(use 45 Crescent in your GPS)



1. From Route 24: Take Bridgewater Exit (Exit 15) and turn right on Rt. 104 (104 East). After 2.5 miles, take right hand turn on Crescent St. (just after Bridgewater Police Station on right hand side of street). After about 500 yards, parking lot is on right side of street.
2. From Route 18 South or Route 28 South: From Central Square Rotary, follow Rt. 104 West to Crescent St., about ½ mile. Take left on Crescent St. (just before Bridgewater Police Station). After about 500 yards, parking lot is on right side of street.
3. From Route 18/28 North: Left on Cottage St. (just before Legion Fields – these are baseball fields, so ignore). After ¼ mile at end of Cottage St., turn left on South St. After 500 yards, take first left onto Crescent St. Parking lot is ¼ mile up the street on the left hand side.